

# OH COME OH COME EMMANUEL

TRADITIONAL

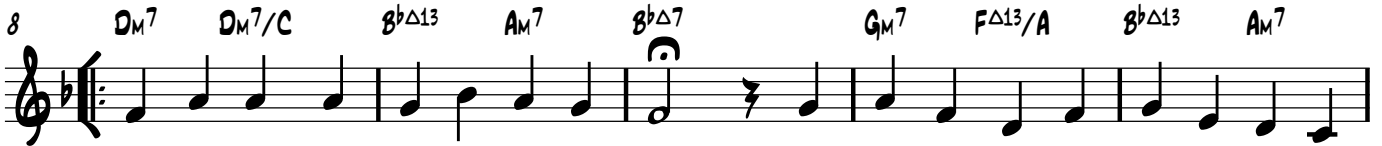
ARRANGED BY DOUGLAS S. SLATER

♩ = 100

DM7 DM7/C B<sup>b</sup>Δ7 AM7 B<sup>b</sup>Δ7 C<sup>9</sup>/B<sup>b</sup> DM7



OH



COME, OH COME E - MAN - U - EL, AND RAN - SOM CAP - TIVE I - SRA -  
 COME THOU WIS - DOM FROM \_\_\_\_\_ ON HIGH, WHO OR - DEST ALL THINGS MIGH - TI -  
 COME THOU DAY - SPRING FROM \_\_\_\_\_ ON HIGH, AND CHEER US BY THY DRAW - ING  
 COME DE - SIRE OF NA - TIONS BIND, IN ONE THE HEARTS OF ALL \_\_\_\_\_ HU - MAN -



EL. THAT MOURNS IN LONE - LY E - - XILE HERE. UN - TIL THE SON OF  
 LY. TO US THE PATH OF KNOW \_\_\_\_\_ LEDGE SHOW. AND TEACH US IN HER  
 NIGH. DIS - PERSE THE GLOO - MY CLOUDS \_\_\_\_\_ OF NIGHT. AND DEATHS DARK SHA - DOW  
 KIND. BE THOU OUR SAD DI - VI - SION CEASE. AND BE THY - SELF OUR

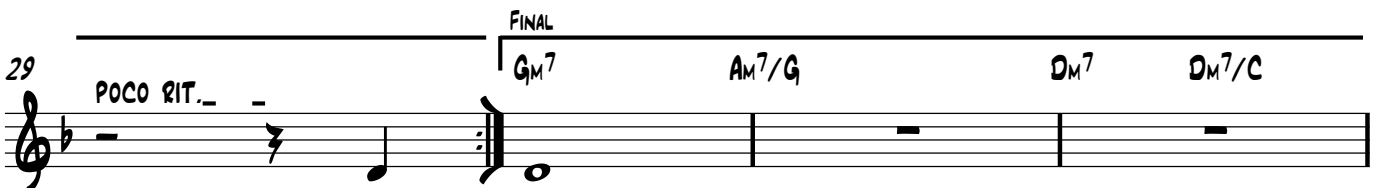


GOD \_\_\_\_\_ AP - PEARs. RE - JOICE, RE - JOICE, E - MAN - - U -  
 WAYS \_\_\_\_\_ TO GO.  
 PUT \_\_\_\_\_ TO FLIGHT.  
 KING \_\_\_\_\_ OF PEACE.

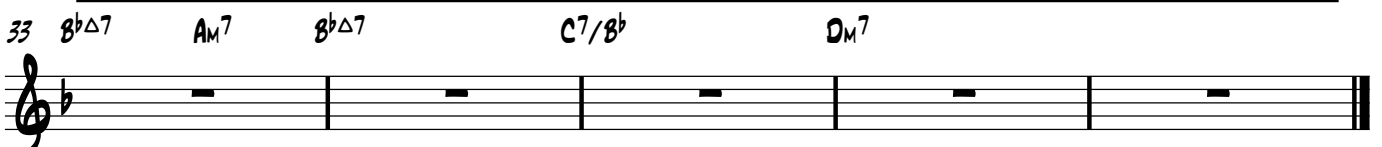
TO VERSES 2. 3. 4



EL. SHALL COME TO THEE OH I - - SRA - EL.



OH EL.



B<sup>b</sup>Δ7 AM7 B<sup>b</sup>Δ7 C<sup>7</sup>/B<sup>b</sup> DM7